

RECAMBIOS QUEMADOR

BOMBAS DANFOSS



| | | |
|-----------------------------------|---------------|----------|
| Bomba Danfoss BFP 21 L3 -071N0107 | RC0213.022170 | 57.94 € |
| Bomba Danfoss BFP 21 L3-071N0170 | RC0213.022070 | 78.46 € |
| Bomba Danfoss BFP 21 R3 -071N0 | RC0213.022171 | 67.06 € |
| Bomba Danfoss BFP 21 R5-07 | RC0213.022173 | 93.66 € |
| Bomba Danfoss BFP 52E L5-071N2202 | RC0213.025202 | 115.39 € |
| Bomba Danfoss RSA 60-070-3352 | RC0213.035521 | 154.98 € |

BOMBAS DELTA



| | | |
|-----------------------------------|---------------|---------|
| Bomba Delta V1 LL 2 | RC0212.011210 | 58.61 € |
| Bomba Delta V1 LR 2 | RC0212.011250 | 53.67 € |
| Bomba Delta V1 RL 2 | RC0212.011170 | 79.98 € |
| Bomba Delta V1 RR 2 | RC0212.011130 | 80.17 € |
| Bomba Delta VM 1 LL 2 | RC0212012530 | 71.95 € |
| Bomba Delta VM 1 LR 2 | RC0212.012570 | 63.64 € |
| Bomba Delta VM 1 RL 2 | RC0212.012170 | 79.98 € |
| Bomba Delta VM 1 RR 2 | RC0212.012130 | 79.98 € |
| Bomba Delta VU UNIVERSAL 6-16 BAR | RC0212.010500 | 84.54 € |

BOMBAS ROCA RIELLO



| | | |
|-------------------------------------|---------------|---------|
| Bomba Roca Ref, 300.7480 (Kadetric) | RC0214.010050 | 110.37€ |
|-------------------------------------|---------------|---------|

PARA OTROS ARTICULOS Y CODIGOS CONSULTAR

BOMBAS SUNTEC



| | | |
|--|---------------|----------|
| Bomba Suntec AN 47 A 7326 3P | RC0210.010021 | 80.99 € |
| Bomba Suntec AN 47 B 7327 3P | RC0210.010060 | 97.83 € |
| Bomba Suntec AN 47 C 7218 4P | RC0210.010070 | 97.45 € |
| Bomba Suntec AN 47 C 7328 3P | RC0210.010100 | 97.83 € |
| Bomba Suntec AN 47 D | RC0210.010140 | 97.83 € |
| Bomba Suntec AS 47 A 1536 - 1589 | RC0210.010770 | 64.21 € |
| Bomba Suntec AS 47 A 1602 K (Ferrolí) | RC0210.070775 | 67.63 € |
| Bomba Suntec AS 47 B 1537(Lamborghini) | RC0210.010800 | 64.21 € |
| Bomba Suntec AS 47 C 1538 =1582 | RC0210.010870 | 64.21 € |
| Bomba Suntec AS 47 D 1539 -1538 | RC0210.010920 | 65.44 € |
| Bomba Suntec AS 67 A 7463 -3P | RC0210.011009 | 137.34 € |

CENTRALITAS BRAHMA



| | | |
|--|----------------|---------|
| Centralita BRAHMA G 22/Z S03 | RC0230.041040 | 48.09 € |
| Centralita BRAHMA Gas Miniflat FM 11 | RC0230.042100 | 57.52 € |
| Centralita BRAHMA Eurobox CM 191.2 | RC0230.0430010 | 66.20 € |
| Centralita BRAHMA FR 1/01 | RC0230.041500 | 49.25 € |
| Centralita BRAHMA G 22/03 | RC0230.041010 | 52.71 € |
| Centralita BRAHMA G 22/09/06/07 | RC0230.041050 | 46.94 € |
| Centralita BRAHMA G 33/03 | RC0230.041310 | 48.09 € |
| Centralita BRAHMA OS1/PR Sustituye OF1/R | RC0230.041706 | 69.53 € |

PARA OTROS ARTICULOS Y CODIGOS CONSULTAR

CENTRALITA CEM



Centralita CEM MA 55 H

RC0231.065120

77.13 €

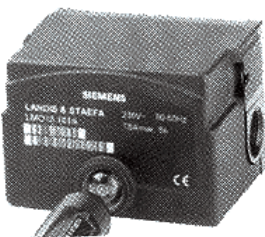
CENTRALITA DANFOSS



**Centralita DANFOSS BHO64 Substitueix Majoria BHO
SUSTITUIDA POR LOA 24**

RC0232.072050

CENTRALITA LANDIS SIEMENS



Centralita L&G LAL 1.25 -S02

RC0233.023100

303.95 €

Centralita L&G LOA 24

RC0233.023070

48.00 €

Centralita L&G LOA 25

RC0233.023080

138.84 €

Centralita L&G LOA 26

RC0233.030082

65.42 €

Centralita L&G LMG 25.330 A27

RC0233.023363

243.91 €

PARA OTROS ARTICULOS Y CODIGOS CONSULTAR

CENTRALITA SATRONIC



satronic **Honeywell**

| | | |
|-------------------------------------|---------------|----------|
| Centralita SATRONIC MMI 810 (40-34) | RC0234.021625 | 303.02 € |
| Centralita SATRONIC TF 801 | RC0234.021010 | 61.55 € |
| Centralita SATRONIC TF 802.1 | RC0234.021030 | 66.68 € |
| Centralita SATRONIC TF 804 | RC0234.021050 | 32.18 € |
| Centralita SATRONIC TF 830.3 | RC0234.021082 | 50.21 € |

CENTRALITA ROCA RIELLO



 **RIELLO**

| | | |
|---|---------------|----------|
| Centralita RIELLO/ROCA RMO 503 SE PREES 600 | RC0236.047030 | 200.76 € |
| Centralita RIELLO/ROCA SE 530 | RC0236.047050 | 81.69 € |
| Centralita RIELLO/ROCA SE 531 | RC0236.047060 | 114.45 € |
| Centralita RIELLO/ROCA SE 553 SE | RC0236.047125 | 114.45 € |

TRANSFORMADOR BRAHMA



BRAHMA

| | | |
|---|---------------|---------|
| Transf. BRAHMA TC 1L 1x15000 / 25mA / 55% | RC0240.040500 | 24.08 € |
| Transf. BRAHMA TC 1S 1x15000 / 25mA / 55% | RC0240.040540 | 24.08 € |
| Transf. BRAHMA TC 2 STCAF TRAF 2x10 Kv / 30mA | RC0240.040860 | 27.43 € |
| Transf. BRAHMA TC 2L 2x10000 / 30mA / 55% | RC0240.040600 | 25.46 € |
| Transf. BRAHMA TC 2S 2x10000 / 30mA / 55% | RC0240.040640 | 25.46 € |
| Transf. BRAHMA TD 2 S TRAF 2x10 Kv / 30mA / 50% | RC0240.042005 | 28.62 € |

PARA OTROS ARTICULOS Y CODIGOS CONSULTAR

TRANSFORMADOR SCALDALAI



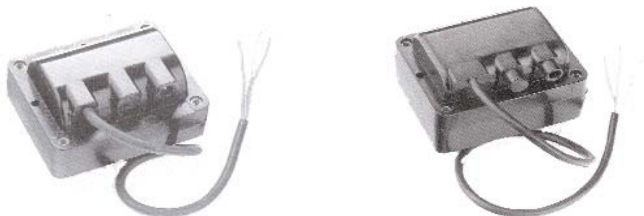
| | | |
|---|---------------|---------|
| Transf. SCALDALAI 1620 1x6000 / 20mA / 33% | RC0241.040250 | 33.47 € |
| Transf. SCALDALAI 1815 1x8000 / 15mA / 100% | RC0241.040260 | 36.94 € |
| Transf. SCALDALAI 1820 1x8000 / 22mA / 33% | RC0241.040270 | 33.67 € |
| Transf. SCALDALAI 21020 2x5000 / 21mA / 33% | RC0241.040320 | 34.82 € |
| Transf. SCALDALAI 21220 2x6000 / 20mA / 33% | RC0241.040330 | 33.86 € |
| Transf. SCALDALAI 2815 2x4000 / 15mA / 100% | RC0241.040280 | 35.40 € |

TRANSFORMADOR DANFOSS



| | | |
|---|---------------|---------|
| Transf. DANFOSS EBI 1P 1x11000 / 50mA / 20% | RC0242.041030 | 36.94 € |
| Transf. DANFOSS EBI 52F0030- 2x7500 V 40 mA 20% | RC0242.041010 | 27.63 € |
| Transf. DANFOSS EBI.M 52F033- 2x7500 / 40mA / 20% | RC0242.041020 | 55.60 € |

TRANSFORMAFOR COFI



| | | |
|--|---------------|---------|
| Transf. COFI TR E 820 2x4000 / 20mA / 25% | RC0243.040030 | 32.51 € |
| Transf. COFI TR E 820 P 1x8000 / 20mA / 25% | RC0243.040020 | 33.28 € |
| Transf. COFI TR G 1035 2x5000 / 35m | RC0243.040200 | 56.94 € |
| Transf. COFI TR S 818 C 2x4000 / 18mA / 100% | RC0243.040120 | 46.55 € |
| Transf. COFI TR S 830 P 1x8000 / 30mA / 25% | RC0243.040100 | 51.36 € |

PARA OTROS ARTICULOS Y CODIGOS CONSULTAR

PRECALENTADOR DANFOSS



| | | |
|--|---------------|----------|
| Precalentador FPHB 5 DANFOSS 030N | RC0228.032050 | 53.29 € |
| Precalentador FPHB 5 DANFOSS 30N2028 C/Caña | RC0228.032079 | 138.84 € |
| Precalentador FPHB 5 DANFOSS ECO 3 030N1202 | RC0840.018950 | 65.96 € |
| Precalentador FPHB 5 DANFOSS Estandar / ECO 3... | RC0228.032040 | 48.57 € |
| Precalentador FPHB5 DANFOSS 30 N | RC0228.032070 | 50.98 € |

BOQUILLAS DANFOSS – STEINEN



| | | |
|--------------------------------|---------------|---------|
| Boquilla 45°- 60°-80° Danfoss | RC0224.031050 | 7.47 € |
| Boquilla 45°- 60°-80° Steinen | RC0220.031050 | 7.47 € |
| Boquilla A-3 45° 110 KG. 20ATM | RC0223.038210 | 54.25 € |

FOTOCELULAS



| | | |
|---|---------------|---------|
| Fotocélula CEM 8209 -MA 55H | RC0231.068060 | 24.38 € |
| Fotocélula DANFOSS LD 450m.m. | RC0232.073006 | 29.05 € |
| Fotocélula FC 9 BRAHMA | RC0230.052030 | 11.85 € |
| Fotocélula L & G QRB 1B - Roja C/Fij. (Ferrolí / ACV...) | RC0233.023530 | 14.80 € |
| Fotocélula MZ 770 S - SATRONIC | RC0234.023010 | 14.31€ |
| Fotocélula RIELLO 483/530/531 SE KADETRONIC | RC0236.049030 | 9.12 € |
| Fotocélula SATRONIC FZ- 711- S (Roja) | RC0234.023021 | 17.81 € |
| Fotorresistencia RIELLO | RC0236.049050 | 25.66 € |

PARA OTROS ARTICULOS Y CODIGOS CONSULTAR

MOTORES SIMEL AACO AEG RIELO



| | | |
|--|---------------|----------|
| Motor "SIMEL" 12-2005 / 100 W(Lamborghini) | MT0250.000016 | 79.60 € |
| Motor "SIMEL"CD/CS 99-2040 / 200 W (Universal) | MT0250.003027 | 78.17 € |
| Motor AACO 60.2.75.32 M 75 W | MT0251.009075 | 71.81 € |
| Motor AEG EB 95 C 28/2 90 W S/Brida | MT0253.000030 | 85.30 € |
| Motor ROCA/RIELO 517 SE | MT0252.000017 | 93.47 € |
| EB 95 C 28/2 100 W FHP (Eco Nuevo) | MT0253.000045 | 121.21 € |

ACOPLAMIENTOS



| | | |
|--|---------------|--------|
| Acoplam. 1 Reb. 14 x 10x 8 m.m. (Chappée) | RC0255.010010 | 1.74 € |
| Acoplam. 1 Reb. 15 x 11 x 8 m.m. (Joannes) | RC0255.030110 | 1.80 € |
| Acoplam. 1 Reb. 20 x 11,5x 8 m.m. (Elco) | RC0255.030083 | 1.95 € |
| Acoplam. 1 Reb. 8 x 18x 16 m.m. (AEG) | RC0255.010100 | 2.93 € |
| Acoplam. 2Reb. 22 x11,5 x 8 m.m. (Vario) | RC0255.030060 | 3.04 € |

ELECTRODOS



| | | |
|--|---------------|---------|
| Electrodo 11 x 150 x 37 m.m./4,0(Bentone) | RC0248.020003 | 7.22 € |
| Electrodo 25 x 40 x 22 m.m.D(Unigas) | RC0248.040036 | 5.21 € |
| Elect. Doble 25 x 40 x 31m.m. / 6,35 (Lamborghini) | RC0248.040051 | 7.70 € |
| Electrodo Doble Estánd. 25 x 43 x 2-70 m.m./4,0 | RC0248.030001 | 5.82 € |
| Elect. Doble 22 x 70 x 24.m. / 4 (Joannes AZ 4) | RC0248.040090 | 8.11 € |
| Elect. Doble 25 x 46 x 20m.m. / 6,35 (Elco) | RC0248.040024 | 10.54 € |

PARA OTROS ARTICULOS Y CODIGOS CONSULTAR

GRUPOS PRESION INPRO



G.P. Gasoleo INPRO 30 N(W) 220V 30L/h

G.P. Gasoleo INPRO 130 N(W) 220V

G.P. Gasoleo Alimentador Aut. Asp.3m / 20 horiz.

GP0219.010010 894.46 €

GP0219.010050 1774.94 €

GP0219.050010 310.44 €

CONTADORES GASOIL



Contador Gasoil VZ 00 3/4"/80 L/h.por impulsos

Contador Gasoil VZ 04 1/8"/80 L/h.

Contador Gasoil VZ 08 1/4"/200 L/h.

Contador Gasoil VZ 20 3/4"/1500 L/h.

CN0260.011012 412.91 €

CN0260.010010 253.11 €

CN0260.010020 312.66 €

CN0260.010040 1123.08 €

FILTROS GASOIL



Filtro Gasoil 1" - 300 Kg/h/0.1.u. (V. Aluminio)

Filtro Gasoil 1/2" - 90 Kg/h/0.1.u. (V. Plástico)

Filtro Gasoil 3/8" - 40 Kg/h/0.1.u. (V. Plástico)

Filtro Gasoil 3/8" - 40 kG/H/0,1 U. (V. Aluminio)

Filtro Gasoil 1/2" - 90 Kg/h/0.1.u. (V. Aluminio)

FI0262.011090 34.63 €

FI0262.011080 14.21 €

FI0262.011040 7.29 €

FI0262.011030 7.09 €

FI0262.011070 15.79 €

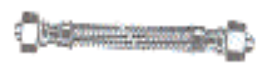
PARA OTROS ARTICULOS Y CODIGOS CONSULTAR

PURGADORES DE AIRE



| | | |
|---|---------------|---------|
| Purga Auto Gasoil Flowcon 3 K - 100 L/H.-6 bar | AR0277.020100 | 69.72 € |
| Purga Auto Gasoil TIGER LOOP 110 i -3/8 ext. filt-llave | AR0277.020020 | 95.14 € |
| Purga Auto Gasoil TIGER LOOP 110-A -3/8 ext. | AR0277.020010 | 58.51 € |

LATIGUILLOS GASOLEO



| | | |
|--|---------------|--------|
| Latiguillo Gasoil 1000 m.m. 1/4"H-Codo 1/4"H | FL0265.030011 | 6.89 € |
| Latiguillo Gasoil 1000 m.m. 1/4"M-3/8"H | FL0265.010060 | 5.64 € |
| Latiguillo Gasoil 1000 m.m. 3/8"H-3/8"H | FL0265.020040 | 6.08 € |
| Latiguillo Gasoil 1000 m.m. 3/8"H-Codo 1/4"H | FL0265.030050 | 6.89 € |
| Latiguillo Gasoil 900 m.m. 3/8"H / 1/4"-M Codo | FL0265.040005 | 6.28 € |
| Latiguillo Gasoil 750 m.m. 1/4"H-Codo 1/4"H | FL0265.030010 | 6.08 € |

PRESOSTATOS DUNGS



| | | |
|--|---------------|---------|
| Presostato DUNGS LGW10A2P-10mbrTO-CONTROL | RG0276.050630 | 74.28 € |
| Presostato DUNGS LGW 10 A2 1-10 mbar | RG0276.050620 | 46.55 € |
| Presostato DUNGS LGW 3 A2/ 0.4-3 mbar | RG0276.050600 | 49.82 € |
| Presostato DUNGS LGW 3A2P/0.4-3mbarT.CONTROL | RG0276.050610 | 74.85 € |
| Presostato DUNGS LGW 50 A2 2,5-50 mbar | RG0276.050640 | 52.13 € |
| Presostato DUNGS LGW 50A2PT/Control0.2-50 mbar | RG0276.050650 | 75.61 € |

PARA OTROS ARTICULOS Y CODIGOS CONSULTAR

VASOS EXPANSION CALDERAS



| | | |
|---|---------------|---------|
| Vaso Exp. Circ ZILMET385/8Lts. | VE0267.060112 | 41.65 € |
| Vaso Exp. Rect.ZILMET-RTE 7.5 ltrs. | VE0267.060131 | 41.94 € |
| Vaso Exp. Circul. ZILMET. ERP 320/10 Lts. | VE0267.060122 | 38.96 € |
| Vaso Exp. Rect.ZILMET. ERP Q 10 Lts. | VE0267.060141 | 51.61 € |

VASOS EXPANSION CALEFACCION—A.C.S.



| | | |
|--|---------------|----------|
| Vaso Exp. Cilin. ZILMET. 24 Lts.(M. Fija) CALEFACCIÓ | VE0267.060214 | 44.63 € |
| Vaso Exp. Cilin.ZILMET 50 Lts.(M. Fija) CALEFACCIÓ | VE0267.060216 | 69.15 € |
| Vaso Exp. A.C.S. D-18 Lts. ZILMET. Cilin. (| VE0267.061013 | 35.01 € |
| Vaso Exp. A.C.S. D-24 Lts.ZILMET Cilin. (M. Fija) | VE0267.061014 | 43.00 € |
| Vaso Exp. A.C.S. DV-80 Lts.ZILMET. c/sop. (M. Fija) | VE0267.061017 | 152.73 € |
| Minivaso Antiariete 0.16 lts. INOX. ZILMET | VE0267.061100 | 41.17 € |

VALVULAS ZONA MOTORIZADA



| | | |
|---|---------------|---------|
| Valv. Zona 2 Vías HONEYWELL 3/4" S/micro | VR0273.042005 | 109.99€ |
| Valv. Zona 2 Vías HONEYWELL 1" C/Micro | VR0273.042020 | 86.44 € |
| Valv. Zona 3 Vías HONEYWELL 1" S/Micro | VR0273.042050 | 85.11 € |
| Motor SYNCRON - 220 V. Recamb. Válv. Zona | MT0273.049005 | 19.24 € |

PARA OTROS ARTICULOS Y CODIGOS CONSULTAR

RECAMBIOS CALDERA

BOMBAS CIRCULACION



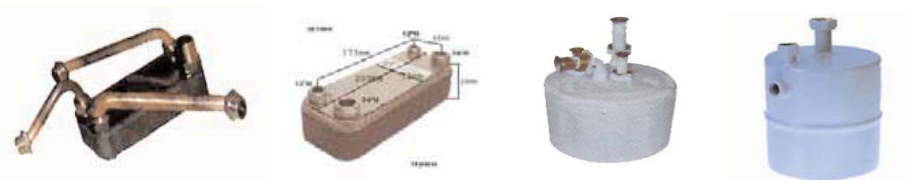
| | | |
|--|---------------|----------|
| Circulador SALMSON NYL 43-25 1"/130 m.m. | CR0290.080011 | 82.64 € |
| Circulador WILO RS 25/7 1"1/2 /180 m.m. | CR0290.30166 | 220.00 € |
| Circulador GRUNFOS UPS 25/50 -1 1/2" /130 m.m. | CR0290.010031 | 89.29 € |

MEMBRANAS



| | | |
|--|---------------|---------|
| Membrana Flujostato GIANNONI | RG0298.040595 | 1.63 € |
| Membrana / Kit C/Juntas Valv. GIANNONI | RC0298.041014 | 10.94 € |
| Membrana Presostato MUT | RG0276.070911 | 4.34 € |
| Membrana Presostato saunier duval | RC0298.040521 | 1.95 € |
| Membrana Válv. Desviadora GIANNONI | RC0298.041010 | 10.54 € |
| Membrana Válv. Desviadora MUT | RC0298.041011 | 11.14 € |

INTERCAMBIADOR



| | | |
|---|----------------|----------|
| Interc. Placas "VAILLANT" Mod. 14 C 24-M | IN0228.073010 | 62.88 € |
| Interc. PlacasVAILLANT Mod.C-724 M+T CORTOS | IN02.28.073001 | 80.74 € |
| Intercambiador K26 MUT C/Racores | IN0228.060027 | 88.72 € |
| Intercambiador K28 (Facody) | IN0228.060030 | 91.76 € |
| Intercambiador K28 MUT C/Purgador1656 | IN0228.060029 | 102.87 € |

PARA OTROS ARTICULOS Y CODIGOS CONSULTAR

TERMO-HIDROMETRO TERMOMETROS



| | | |
|---|----------------------|----------------|
| Termohidrometro Blanco D52 0°-120°c 0 6bar | RG0275.030286 | 25.66 € |
| Termohidrometro negro D52 0-120 °C / 0-6 bar | RC0275.030285 | 25.46 € |
| Termometro 52 m.m 0/120°C L. C/Bulbo 1000 m.m. | RG0275.010081 | 11.55 € |
| Termom.Caldera0/120°C-62x12 m.m.Bulbo1500 m.m. | RG0275.022125 | 11.43 € |

VALV.DESVIADORA



| | | |
|--|----------------------|----------------|
| Valv. Desviadora Caldera PFV33-F Esc-. Der. | VR0273.030188 | 85.49 € |
| Valv. Desviadora Caldera PFV33-F Esc-. Izq. | VR0273.030189 | 84.16 € |
| Valv. Desviadora Caldera PFV331 -Recta | VR0273.030186 | 79.22 € |
| Valv. de agua Caldera S/D | VR0273.004015 | 70.10 € |

REGULACION GAS



| | | |
|--|----------------------|-----------------|
| BLO.REGULACION SIT NOVA 824010 | RG0295.008240 | 151.44 € |
| BLO.REGULACIÓN GAS V4600 Q 2018 HONEYWELL | RG0294.000240 | 228.15 € |
| BLO.REGULACIÓN GAS V8600N 2171 HONEYWELL | RG0294.000730 | 79.22 € |
| BLO.REGULACION SIT NOVA 810 Mod. 0810138 | RG0295.000056 | 240.53 € |

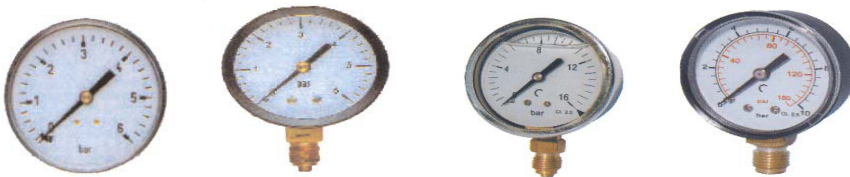
PARA OTROS ARTICULOS Y CODIGOS CONSULTAR

VAL.LLENADO.SEGURIDAD



| | | |
|--|---------------|---------|
| Valv.Llenado AutOR1/2"0,5/4,0Max.M-M1/2"C/T.Manom. | VR0271.020021 | 36.55 € |
| Valv. Segur. OR H-H 1/2" / 3 bar | VR0271.040013 | 8.51 € |
| Valv. Segur. OR M-H 1/2" / 3 bar C/T 1/4" | VR0271.040016 | 10.74 € |
| Valv. Segur. OR H-H 1/2" 7 bar | VR0271.040033 | 12.06 € |
| Valv segu.REGUVAL 2T-1/2 | RG4103.116015 | 21.14 € |

MANOMETROS



| | | |
|---|---------------|---------|
| Manometro 0-6 Barr 1/4" RADIAL | RG0277.060008 | 6.08 € |
| Manometro 0-10 Barr 1/4"/ 60 m.m. a | RG0277.060009 | 6.30 € |
| Manom. Glicerina 0 - 16 bar - 63 m.m. S | RG0277.061115 | 11.59 € |
| Manometro 0-4 Barr 1/4" Radial/ 53 m.m. a | RG0277.060201 | 5.43 € |

TERMOSTATOS



| | | |
|---|---------------|----------|
| Termost. Inmer. IMIT TC 2 100 m.m. 1/2" 0° - 90°C | RG0275.042470 | 19.14 € |
| Termost.HONEYWELL FAN-LIMIT L-4064-N 2bot. | RG0274.081018 | 97.07 € |
| Termost. Digital HONEYWELL Programador Semanal | RG0274.081072 | 160.66 € |
| Termost. Digital SUNER S-5 | RG0274.020014 | 35.15 € |
| Programador Digital Semanal SUNER S-3 | RG0274.020012 | 60.38 € |
| Termost. Ambiente orkliTA 3 10 30°C | RG0275.046008 | 11.55 € |
| Termost. Contacto IMIT BRC 20/90°C (Imit) | RG0275.045610 | 12.43 € |

PARA OTROS ARTICULOS Y CODIGOS CONSULTAR

TERMOPARES



| | | |
|---|---------------|---------|
| Termopar SIME con derivacion y klixon | RC0201.001250 | 43.04 € |
| Termopar Univ. 900 m.m. 6 Rac. (Cast) | RC0210.002021 | 6.14 € |
| Termopar 270 m.m.junkers bosch m10x1 | RC0210.001184 | 6.70 € |
| Termopar 750 m.m. Ref. A2747 (Honey/Ferrolli) | RC0210.001160 | 6.18 € |
| Termopar 900 m.m. CHAFFOTEAUX c/deriv. | RC0210.001122 | 8.78 € |

CLIXON-SONDAS TEMP



| | | |
|-----------------------------------|---------------|---------|
| sonda sanitaria themis thelia SD | RG0274.070115 | 38.86 € |
| Sonda Temp. chaffeto termistancia | RG0274.070060 | 8.61 € |
| Sonda Temp. ROCA/SAVIO verde | RG0274.073025 | 4.13 € |
| Sonda Temp. ST03 BRAMA | RG0274.073012 | 4.56 € |
| klison 100°term. escuadra c/brida | RG0274.072200 | 4.56 € |
| klison 85° term. escuadra c/brida | RG0274.072185 | 4.56 € |

PARA OTROS ARTICULOS Y CODIGOS CONSULTAR